

NEW  
PRODUCT

STIEBEL ELTRON – THE WORLD LEADER  
IN ELECTRIC CONTINUOUS FLOW.



## Electronically controlled hot water – All day, every day.

Stiebel Eltron is the world leading manufacturer of electrical instantaneous water heaters, with a reputation for innovative design and quality products. The Stiebel Eltron DHB-E is now available in South Africa and with electronic stepless control it offers constant temperature with all water saving fixtures. This model replaces the DHB range.

The compact design allows for installation in areas where space is limited. The simplicity of this unit provides easy and cost effective installation.

The DHB-E saves energy as it only heats water as required, unlike storage water heaters that keep constantly heating water to high temperature. Being installed close to the point of use offers savings in time, energy and water by eliminating long lengths of pipe.



**STIEBEL ELTRON**

# Technical Data

**STIEBEL ELTRON**

## Three phase instantaneous water heater

Model	DHB-E 24	DHB-E 27
Electrical Connection	24kW~400V~35A	27kW, 400V~39A
Switch on Flow Rate	3.0L/min / No Pressure Needed	
Electrical Installation/Circuit Breaker/Cable Size	35amp / 6mm	39amp / 10mm
Tank Material & Nominal Capacity	Copper / 0.4 litres	
Type of System	Three phase electric & Closed Pressurized Instantaneous	
Permissible & Recommended Operating Pressure	1000kPa (10Bar) & 400kPa (4Bar)	

### Dimensions

Height	470mm
Width	225mm
Depth	110mm
Weight Filled With Water	5.5kg
Approvals & Protection Standard	SABS / VDEW & IP25
Element Type	Bare Wire (for Hard Water)
Installation Requirements: Water & Electrical	15mm & 3 lives & Earth (3/PE) 380V~400V~415V

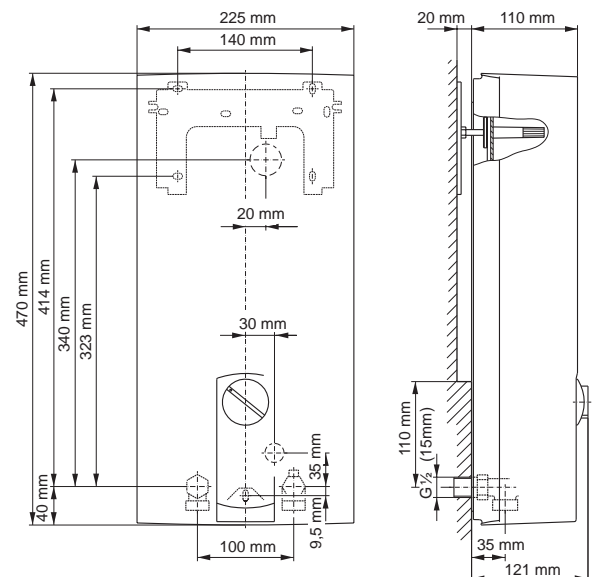
### Temperature Rise (Maximum Outlet Temperature 60°)

Add the below temperature to the cold water inlet temperature

	6L/min	8L/min	10L/min	12L/min	14L/min
DHB-E 27	47°C	38°C	31°C	27°C	
DHB-E 24	42°C	34°C	28°C	24°C	

### Why the Stiebel Eltron three phase instantaneous is right for you.

- SABS Approved
- Installer and user friendly
- Innovative space saving design
- Electronically controlled
- Power saving due to the fact that no water is stored
- High flow rates and temperature rise
- Point of use installation
- Energy saving settings
- No safety drip tray required
- Market leader
- No flue or ventilation
- Designed for South African conditions



Distributed by

CALL: 0833389106

• Johannesburg 0114936910 • Durban 0313062470 • Cape Town 0215314778 •  
www.stiebel-eltron.co.za