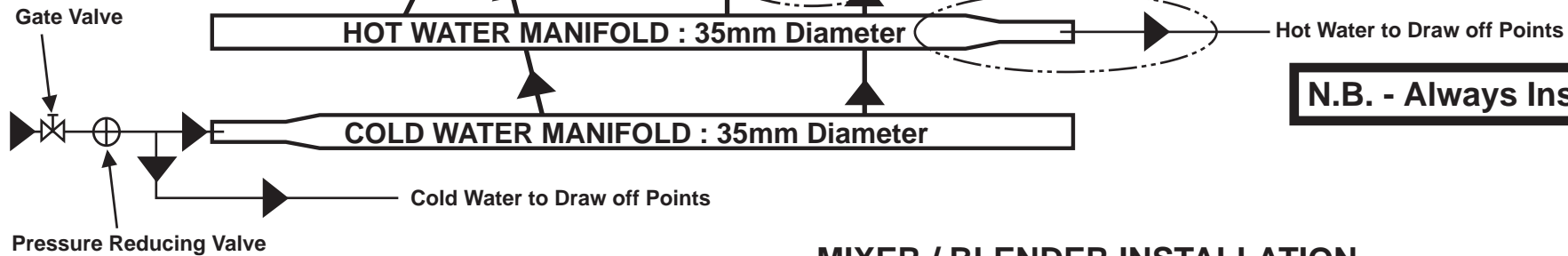
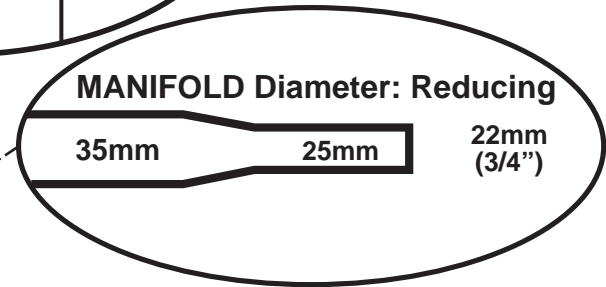
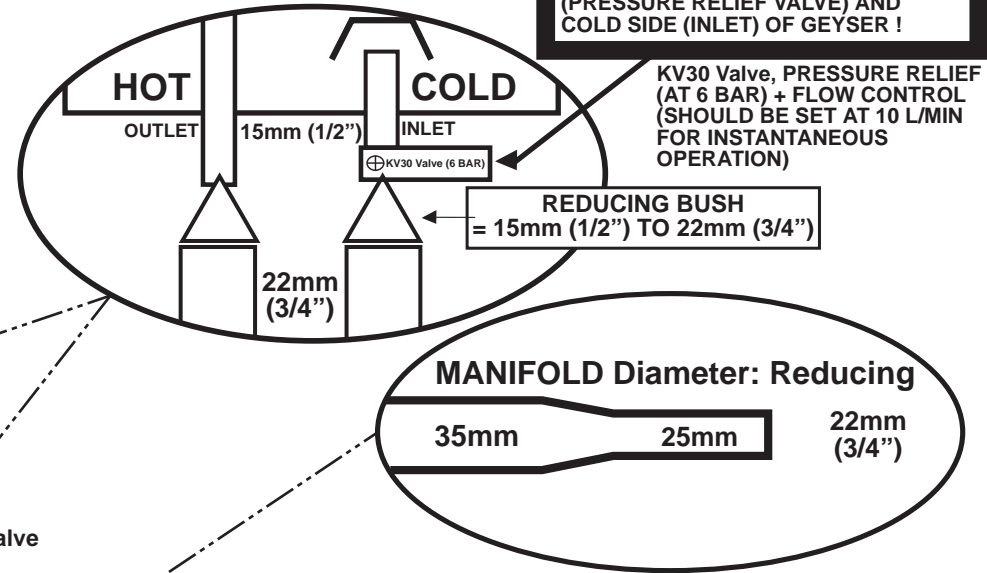
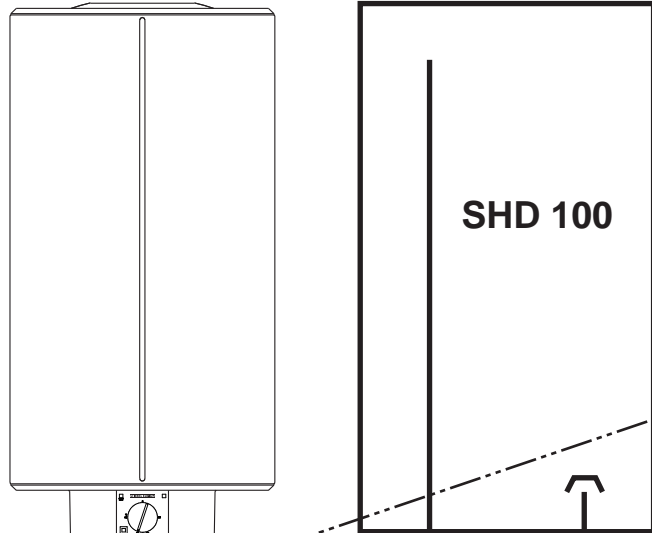


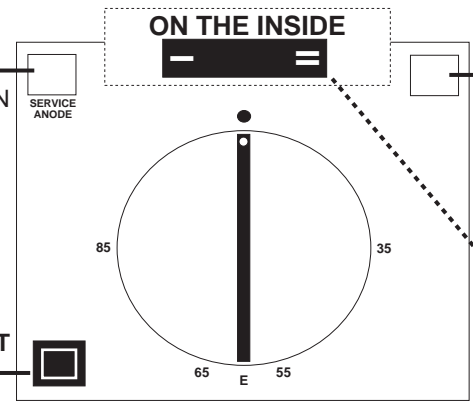
# SHD 100 S Connecting In Paraelel

## Description

Pressure-type for several outlets. White, enamelled outer container, top and bottom with light grey cap. The storage heaters are equipped with an inner tank made of steel with special enamelled interior and anticorrosion anode, PUR-insulation. The water is kept at adjusted temperature thermostatically. Exchangeable copper heating flange 3.5/21KW in single circuit state or for small quantities needed it works as a storage heater with 3.5KW heating, for large quantities it works as an instantaneous water heater with 21KW. Infinitely variable thermostat with anti-freeze setting, adjustable from approx. 35°C up to 85°C, safety temperature limiter, zero-voltage relay.



## FRONT PANEL DESCRIPTION



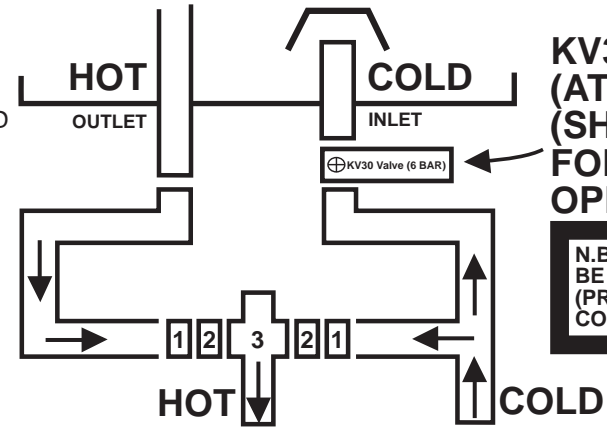
ANODE LIGHT WHEN ON, THE ANODE (CORROSION PROTECTION CIRCUIT NEEDS REPLACEMENT, BECAUSE ITS BEEN EATEN AWAY BY HOT WATER CORROSION.

PUSH BUTTON FOR QUICK HEATING - WILL ONLY WORK IN DUAL / SINGLE CYCLE HOT WATER STORAGE OPERATION (WHICH IS 3.5KW), WHEN BUTTON IS PUSH 21KW HEATS UP WATER TO TEMPERATURE.

THERMOSTAT LIGHT WHEN ON, (ONE THIRD OF THE HOT WATER HAS BEEN USED), ELEMENT IS HEATING UP WATER.

OPERATION MODE SWITCH - PLEASE REFER TO THE ELECTRICAL CONNECTION PAGE.

## MIXER / BLENDER INSTALLATION



**KV30 Valve, PRESSURE RELIEF (AT 6 BAR) + FLOW CONTROL (SHOULD BE SET AT 10 L/MIN FOR INSTANTANEOUS OPERATION)**

**N.B. - NO VALVES OF ANY KIND MUST BE INSTALLED BETWEEN KV 30 VALVE (PRESSURE RELIEF VALVE) AND COLD SIDE (INLET) OF GEYSER !**

- 1 = STRAINER / FILTER
- 2 = ONE-WAY VALVE
- 3 = MIXER / BLENDER

## SHD 100 S Remote Reset Switch

GRANT MOCKE:CELL;0833389106  
STIEBEL ELTRON S.A. AGENCIES

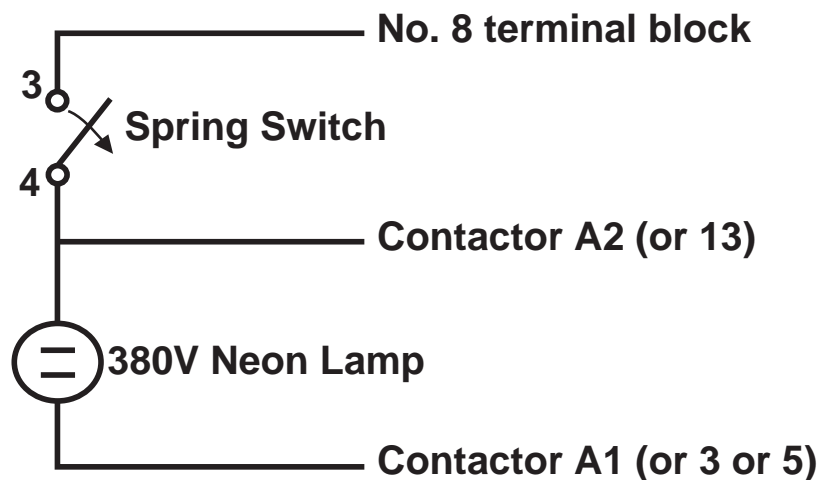
### NOTE:

- 1) RESET SWITCH IS NOT NEEDED IF YOU WIRE ELECTRICS IN STRAIGHT 21KW MODE
- 2) WHEN THE ANODE LIGHT COMES ON THE UNIT NEEDS TO BE SERVICED, IF THE LIGHT CAN NOT BE SEEN THEN WIRE IN A SECOND LIGHT SO THE USER CAN SEE THE LIGHT COME ON

INSTALLING INTO CEILING (ROOF), (if there is a power failure the thermostat has to be reset, otherwise the unit cuts its power to protect the element from power surges.) You can do this manually by turning dial to 0 and then back up to the desired temperature, or a electrician can connect up a reset switch for operation at ground level. Electrician has to run 5 wires to ground floor, three of which is for reset switch and the remaining two is to extend the anode replacement light (When the anode light comes on it has to be replaced as soon as possible as it indicates that the corrosion protection circuit has been eaten away, IF THIS IS NOT CHECKED YOUR HOT WATER BEING 55 TO 85 DEGREES WILL EAT THROUGH YOUR TANK, AND WHOLE UNIT WILL HAVE TO BE REPLACED WITH A NEW ONE, AS WE DO NOT REPAIR OR REPLACE TANKS !)  
I.E.:

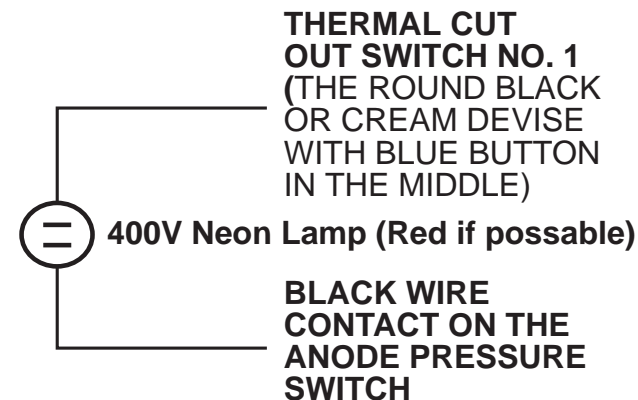
Connect wires from geyser too a panel with two holes for the two lamps (one been the Thermostat light on Reset Switch Circuit, and the other been the extension (or installation of second) Anode Replacement light) and a third hole for spring switch.

## RESET SWITCH WIRING



**NB - Lamp must be 380 volt.  
and  
Spring Switch to return to  
open position.**

## ANODE, EXTENSION OR SECOND LIGHT DIAGRAM



**NB - Lamp must be 400 volt.  
and  
PLEASE ADD A SECOND  
LIGHT TOO EXISTING CIRCUIT,  
LABEL LIGHT "ANODE NEEDS  
REPLACEMENT, CONTACT  
SUPPLIER.**

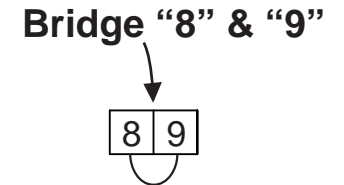
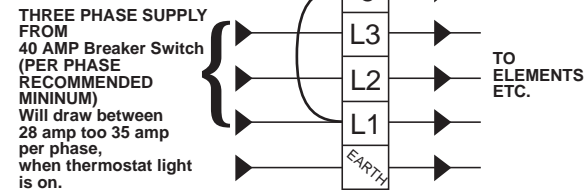
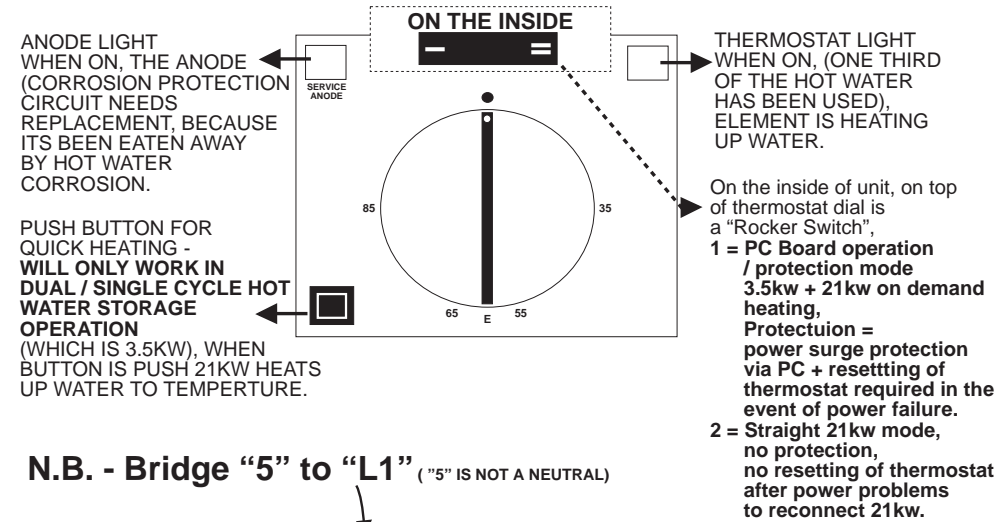
# SHD 100 S Electrical Connection

GRANT MOCKE:CELL;0833389106  
STIEBEL ELTRON S.A. AGENCIES

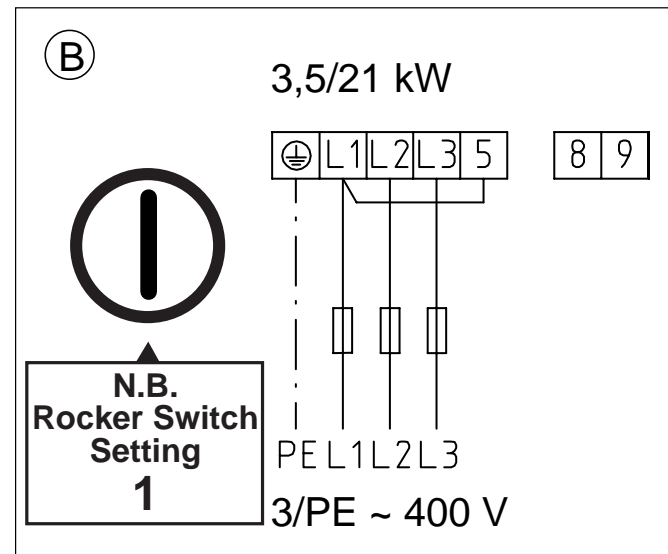
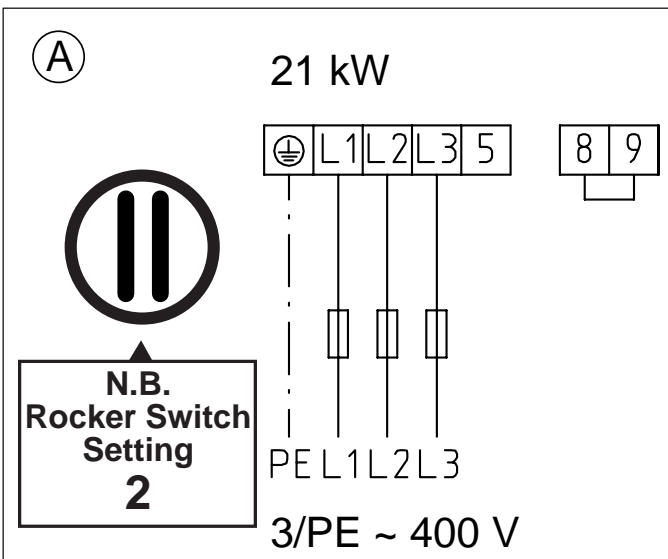
## NOTE:

- 1) THREE PHASE SUPPLY, PLUS AN EARTH, NO NEUTRAL IS USED.
- 2) ISOLATOR MUST BE USED CLOSE TOO THE UNIT.
- 3) "40 AMP" CIRCUIT BREAKER TO BE USED ON EACH PHASE, WILL DRAW +/- 35 AMP MAX PER PAHSE.
- 3) SQUARE BUTTON ON FRONT CONTROL PANEL HAS NO FUNCTION IN 21kW MODE.

## FRONT PANEL DESCRIPTION



A: STRAIGHT 21KW - NO PC BOARD INTELLIGENCE  
NO RESETTING OF UNIT AFTER POWER FAILURE'S  
NO PROTECTION OF ELEMENT FROM POWER SURGES.



B: PC BOARD INTELLIGENCE - 3.5KW KEEPS WATER WARM 21KW CALLED ON DEMAND. PC BOARD SWITCHES OFF ELEMENT WHEN POWER FAILS OR IF THERE ARE POWER SURGES - 3.5KW WILL STAY ON BUT 21KW WILL ONLY COME ON WITH A RESET OF THERMOSTAT DIAL (TURN TO "0" OFF POSITION THEN BACK UP TOO THE DESIRED TEMPERATURE i.e. 85 DEGREES)