

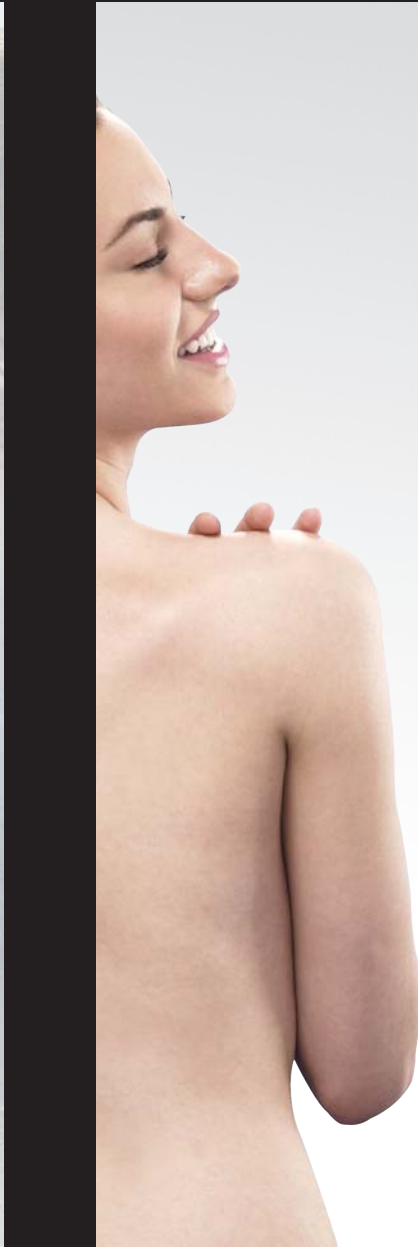
The water heater Germans



most



**STIEBEL ELTRON**



DHCC 45,55,80,85E



DHCC 70,75E



DHCC 60,65E



## Technical Data

		DHCC							
Type		45 45E	55 55E	60 60E	65 65E	70 70E	75 75E	80 80E	85 85E
Design	Closed water heater								
Rated working pressure	1 MPa / 10 bar								
Cold water connection	G 1/2"								
Electrical connection	1/N/PE~220-240V								1/N/PE~220V/230V
Rated Power (kW) - Rated current (A)	kW - A	kW - A	kW - A	kW - A	kW - A	kW - A	kW - A	kW - A	kW - A
	220 V	4.5 - 20.5	5.5 - 25.0	6.0 - 27.3	6.5 - 29.5	7.3 - 33.2	7.5 - 34.1	8.0 - 36.4	8.5 - 38.6
	230 V	4.9 - 21.3	6.0 - 26.1	6.6 - 28.7	7.1 - 30.9	8.0 - 34.8	8.2 - 35.8	8.7 - 37.8	9.3 - 40.4
	240 V	5.4 - 22.5	6.5 - 27.1	7.1 - 29.6	7.7 - 32.2	8.7 - 36.3	8.9 - 37.1	9.5 - 39.6	

## Features

- 🇩🇪 Latest innovation from Germany
- 🇩🇪 Multi-functional multi point / shower unit
- 🇩🇪 No scalding and overheating with thermal sensor cut off.
- 🇩🇪 Electronic temperature control
- 🇩🇪 EMC compliant
- 🇩🇪 ELSD - Protection against electricity leakage (optional)
- 🇩🇪 Precise comfort temperature with stepless power regulator
- 🇩🇪 Works well even with low water pressure
- 🇩🇪 Safe and splash proof (IP25 water protection)
- 🇩🇪 Easy installation
- 🇩🇪 CE approved



### CE Approved

Fulfills the safety standards on  
EMC (Electromagnetic Compatibility)  
& EMI (Electromagnetic Interference)

